

---

## ARMADA SYSTEM

### About Your Order.

Your order will be shipped with the supports and rail components packaged inside the ramp package. Each accessory package is labeled.

### Check the Order – Before the Carrier leaves!

Make sure that all of the parts required are included in your shipment BEFORE going to the job site. A packing slip is included with your order. Please take the time to check that all of the parts arrived and are in good condition. If you have any damaged or missing parts that are listed on the packing slip, IMMEDIATELY call the carrier that delivered your order and note the damaged or missing parts.

### Read the Instructions.

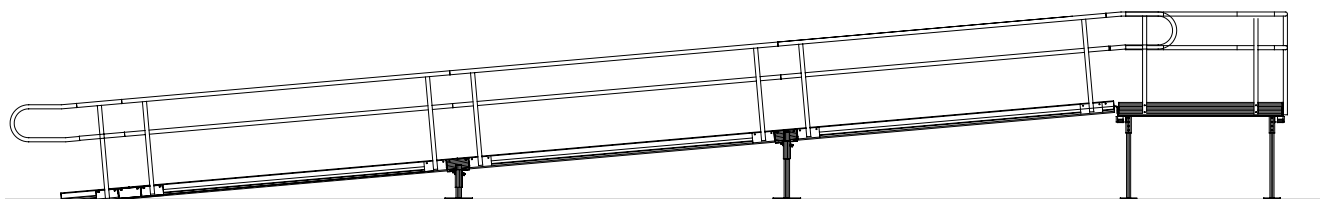
Take the time to completely read the instructions on how to assemble the ramping system. It may answer some questions you have before you get to the job site. If you have any questions please feel free to contact us at 1-800-800-3864 or visit our website at [www.alumiramp.com](http://www.alumiramp.com).

### Tools Required.

- 1/2" wrench (2)
- electric drill w/#10 drill bit
- phillips head screwdriver
- miter saw or hacksaw
- extension cord
- level
- tape measure
- pencil or marker
- rubber mallet

### Optional Tools.

- air compressor
- reciprocating saw
- pneumatic riveter
- pop rivet gun
- level
- flat file
- shovel (just in case)

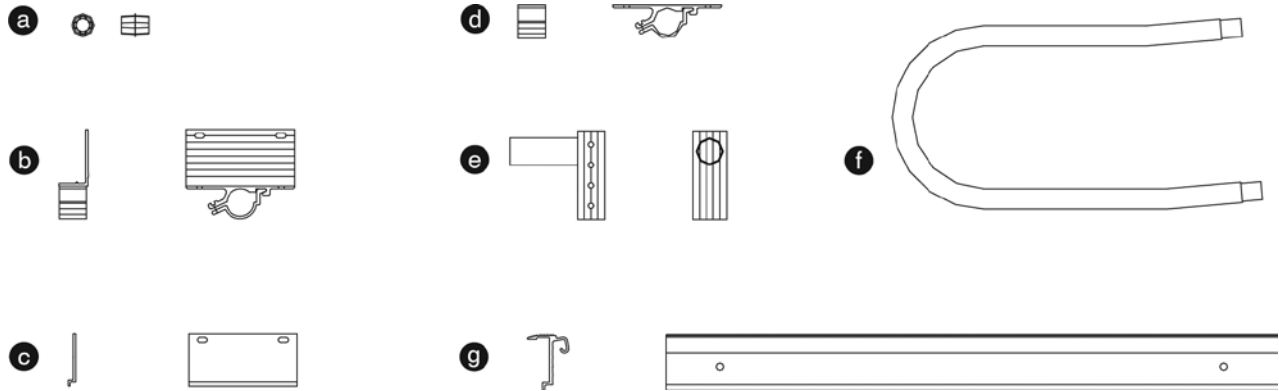


# instructions page 2

## ARMADA SYSTEM

### Installation Overview.

It is recommended that you start each installation by organizing and identifying the components of your system. Shown below are our common components with a brief description of use.



- a. Rail Insert (black) - connects Ramp Handrails.
- b. Ramp Connecting Angle - connects two Ramp Sections and a Leg.
- c. Starter Connecting Plate - connects the Starter Ramp to the Ramp run.
- d. Extruded Bracket - attaches under Platforms and holds the Leg Socket.
- e. Leg Socket - attaches Legs to System.
- f. ANSI Loop - attaches to top and bottom of Ramp run. Required for ADA approval.
- g. Platform Adapter - connects Ramps to Platforms.

Accessory Packages are listed at the end of the instructions.

ARMADA SYSTEMS

The ARMADA SYSTEM is always installed beginning at the top and working down. First install all Platforms and Ramps, then install all Handrails. This insures that you are satisfied with the location and slope of the System before aligning all the Handrails.

1. Platforms. (Use accessory package 1039 and 1050.)

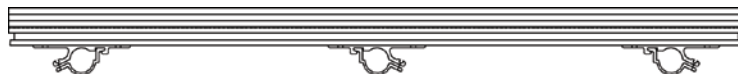
NOTE: all ARMADA SYSTEM Platforms are designed to be universal, i.e. may be oriented any way.

A. Review your layout and decide on which sides of the Platform you would like the legs to be. This will depend on the location of any adjacent buildings or obstacles. You will need one leg on each corner. Attach the Extruded Brackets to the underside of the Platform using (BOLT PACKAGE 1041):

- (4) Extruded Brackets
- (8) 5/16 x 1" hex bolt
- (8) 5/16 hex nut



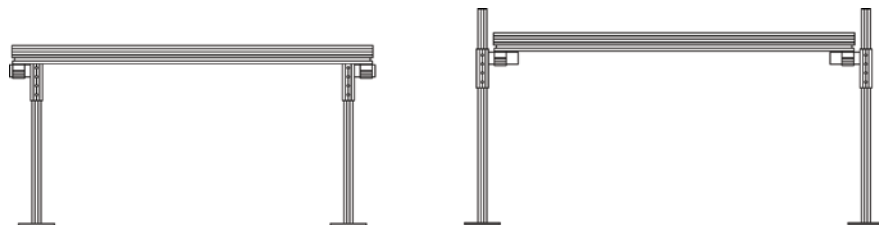
If you are installing a Turnback Platform you will need to install 2 additional Extruded Brackets, 2 additional Leg Sockets and Legs. Be sure to tighten all nuts.



B. Install the Leg Sockets by sliding the 2" tube into the Extruded Bracket and tightening the pre-installed 5/16 bolt. Leg Sockets can be installed so the Leg will be under the Platform or to the outside. Keep in mind that if you want to place the Legs under the Platform you will need to trim the height of the Legs to fit.

C. Move your Platform into position and slide the appropriate height Legs into the Leg Sockets. Adjust to the correct height, level and bolt in place using:

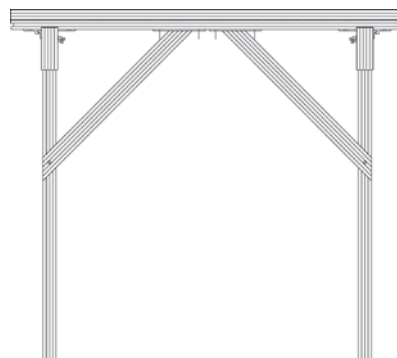
- (4) 5/16 x 3" hex bolt
- (4) 5/16 lock nut



D. For platforms above 48" we recommend using Diagonal Braces, each 60" x 60" platform takes four. If you are using Diagonal Braces line up each brace as shown below. Mark the location of the holes or clamp in position and then drill out three holes for each brace, one through the leg and two through the underside of the platform. Bolt each brace in place using:

- (1) 3/8 x 4" hex bolt for the leg
- (1) 3/8 hex nut
- (2) 5/16 x 1" hex bolt
- (3) 5/16 hex nut

After installing all the braces make sure to securely tighten all nuts.



## instructions page 4

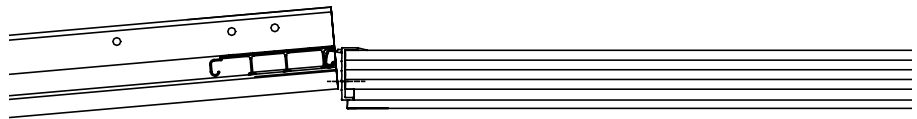
## ARMADA SYSTEM

## 2. Ramps. (Use accessory package 1055 and 1052.)

NOTE: AlumiRamp along with most Regulatory Agencies recommends 1 foot of run for every 1 inch of rise (12:1 ratio).

- A. Select the top Ramp of a run. Take the Platform Adapter and interlock it into the end of the top Ramp section. Move the Ramp into position and lock the Platform Adapter into the Platform so the top lip rests on the Platform. Drill holes in the Platform using the Platform Adapter as a guide - it may be easier to do this without the ramp attached. Secure in place using (BOLT PACKAGE 1058):

- (2) 5/16 x 1" hex bolt
- (2) 5/16" flat washers
- (2) 5/16 hex nut

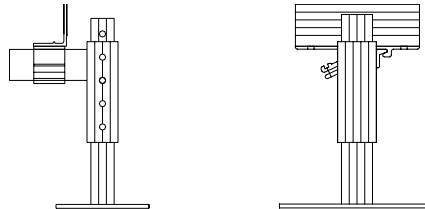


If attaching to a porch take the Top Adapter Plate and interlock it into the end of the top Ramp section. Move the Ramp into position and set the Top Adapter Plate so it rests on the porch with the maximum possible overlap. When you are sure of the Ramp position drill two holes, using the factory holes in the Top Adapter Plate as a guide. Secure in place using (BOLT PACKAGE 3608):

- (2) 1/4 lag screws
- (2) anchors (will require a 5/16" hole that is 1-3/8" deep)

- B. Slide each Leg Socket into a Ramp Connecting Angle. Attach in place with the nut on the outside using (BOLT PACKAGE 1056):

- (2) 5/16 x 1" hex bolt
- (2) 5/16 flat washer
- (2) 5/16 hex nut



NOTE: The bottom of last Ramp section before the Starter Ramp will rest on the ground and will not need Legs.

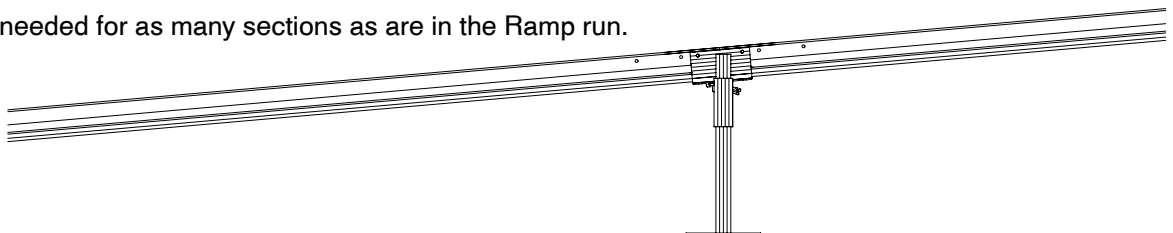
Select the appropriate Leg height for the bottom of the Ramp. Slide the two Legs into two Leg Sockets and bolt in place at the approximate height with:

- (2) 5/16 x 3" hex bolt
- (2) 5/16 hex lock nut

- C. Select the next Ramp Section and fit it together with the previous, it should rest on the Ramp Connecting Angles you just installed. Bolt this section in place with the nut to the outside using (BOLT PACKAGE 1056):

- (2) 5/16 x 1" hex bolt
- (2) 5/16 flat washer
- (2) 5/16 hex nut

Repeat as needed for as many sections as are in the Ramp run.



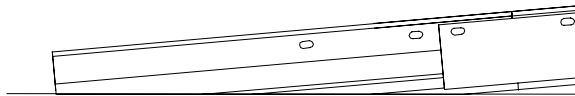
[www.alumiramp.com](http://www.alumiramp.com)

AlumiRamp, Inc. | 855 East Chicago Road | Quincy, MI 49082  
800.800.3864

ARMADA SYSTEM

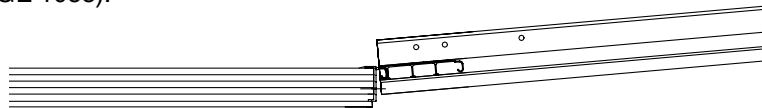
D. If the bottom of the Ramp run ends on the ground you will need to end with a Starter Ramp. The Starter Ramp will have two Starter Connecting Plates. These attach by inserting into the groove on the Ramp Stringer. Bolt in place with the nut on the outside using (BOLT PACKAGE 1040):

- (4) 5/16 x 1" hex bolt
- (4) 5/16 washer
- (4) 5/16 hex nut



E. If the bottom of the Ramp run ends on a Platform you will need to attach a Platform Adapter. This will interlock with the last Ramp Section in the same way as in step A. Secure in place after the Platform it rests on is installed using (BOLT PACKAGE 1058):

- (2) 5/16 x 1" hex bolt
- (2) 5/16 hex nut



### 3. Check System

Once all Ramps and Platforms have been installed it is important to double check that all Platforms are level and all Ramps have a safe and consistent slope. Then all nuts and bolts should be tightened securely.

### 4. Rails. (Use accessory package 1038, 1039, 1050.)

NOTE: AlumiRamp requires Handrails be installed on all ARMADA SYSTEMS. Use without Handrails may be unsafe and should be avoided.

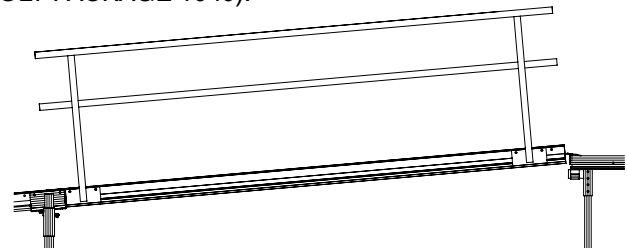
A. Install the Ramp Handrails first. Each Handrail section fits into the groove of the Ramp stringer and is held in place by the lip on the bottom of each flag. Align the two holes in each flag with the holes in the Ramp stringer and secure in place with the nut to the outside using (BOLT PACKAGE 1040):

- (4) 5/16 x 1" hex bolt
- (4) 5/16 washer
- (4) 5/16 hex nut

Leave the nuts slightly loose until you have checked the alignment and connected the rails.

#### Handrail Connection:

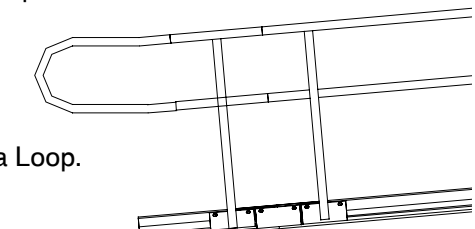
To connect two Rails together, place the black Rail Inserts into one end of the Handrail (using a rubber mallet will make this easier). Place the next Handrail into the groove of the Ramp and slide the Rail into the inserts of the previous Handrail, forcing the Rails to meet. Once Handrails are aligned, tighten all bolts.



B. At the end of the Handrails it is recommended that you install ANSI Loops. These come with inserts installed that slide into the handrail and are attached with either:

- (2) pop rivets, OR:
- (2) self drilling/self tapping phillip head screws

Caps are also included in case you want to seal the Handrail without a Loop.



# instructions page 6

## ARMADA SYSTEM

C. Platform Handrails fit into the groove in the Platform stringer and are held in place with (BOLT PACKAGE 1041):

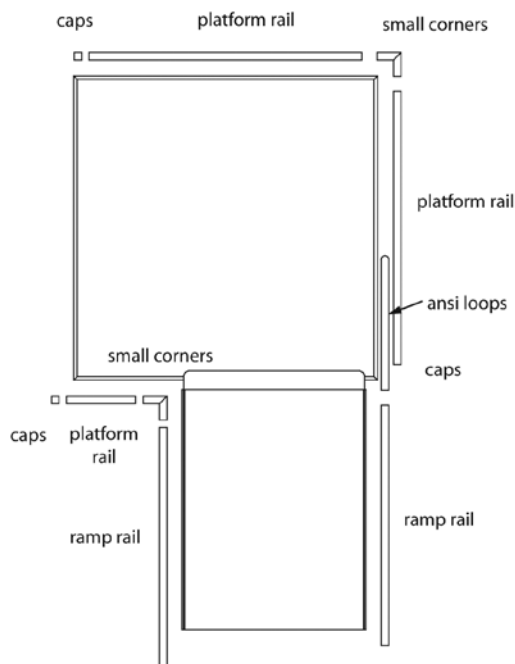
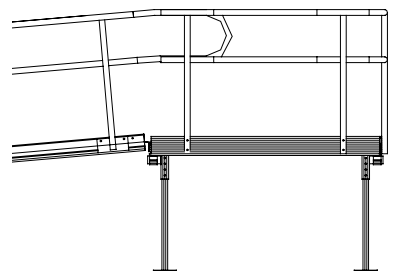
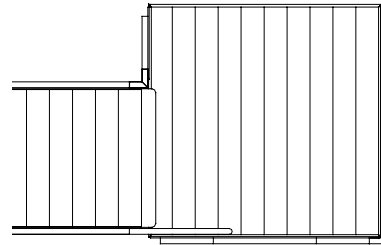
- (2) 5/16 x 2-1/2" hex bolts
- (2) 5/16 hex nuts

Be sure to place the nut to the outside of the Handrail. Corners can be made continuous by using the Corners included in the Accessory Package and connecting them with either:

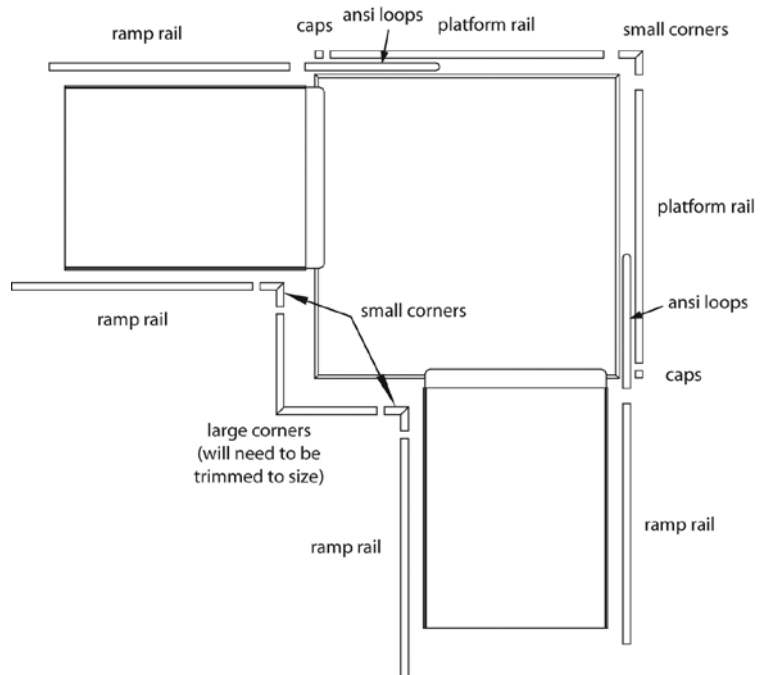
- (4) pop rivets, OR:
- (4) self drilling/self tapping philip head screws

It is highly recommended that you install all the corners before you tighten the Handrails, this will allow for some adjustment. Standard configurations are shown below.

NOTE: On some configurations it will be necessary to trim the Corners to size before installing.



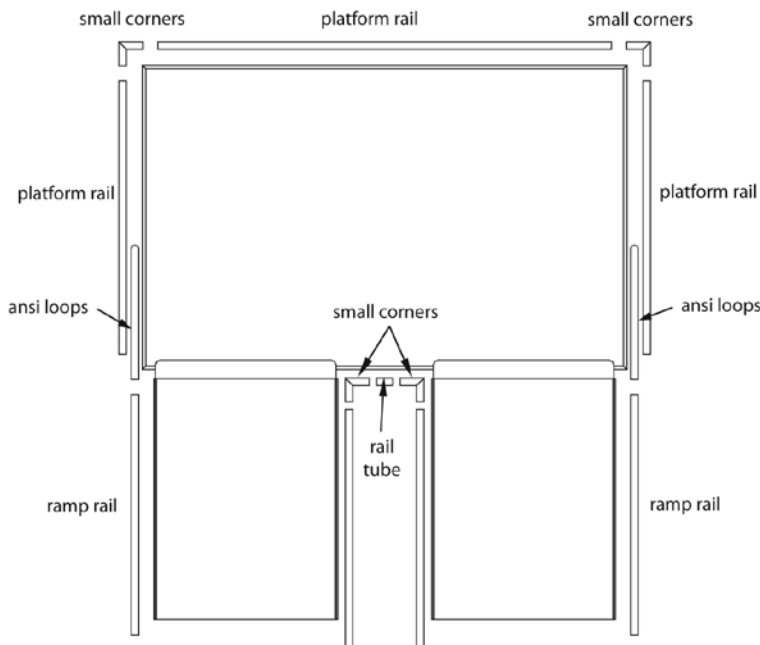
TURN PLATFORM TOP



TURN PLATFORM

bridging the gap.

ARMADA SYSTEM



TURNBACK PLATFORM

5. Finishing Installation.

Before you leave the job site be sure to check the following:

A. All fasteners are tightened appropriately.

- Ramp and Platform supports
- Ramp connecting angles
- Top Adapter & Bevels
- Handrail bolts

B. Handrail connections are smooth with no sharp edges. All corners and loops are riveted or screwed firmly in place.

C. Check around and under the ARMADA SYSTEM for tools. It is easy to miss a tool that was on the ground when a ramp was placed above it during assembly.

NOTE: We recommend that the user of the ramp test the ramp before installers leave the job site. Any feedback or problems can be dealt with at that time.

**Please contact us if you have any questions or concerns with the installation of a ramping system.**

AlumiRamp Customer Service  
PH: 1-800-800-3864  
Fax: 1-800-753-7267  
sales@alumiramp.com  
www.alumiramp.com

www.alumiramp.com

AlumiRamp, Inc. | 855 East Chicago Road | Quincy, MI 49082  
800.800.3864

## instructions page 8

## ARMADA SYSTEM

Accessory Packages are listed below.

1038 Accessory Package Ramp Rail - One package is needed for each pair of rails, includes:

1057	Armada rail insert	4
1040	bolt package ramp rail	1

1039 Accessory Package Platform - One package is needed for each Platform:

1037	leg socket	4
1041	bolt pkg platform	1
1051A	corner 90 deg	4
1051I	corner 90 deg w/insert	4
1057	rail insert	8
EB	extruded bracket	4
RAILPKLP	handrail loops	2
RAIL90CA	corner 90 deg large	2
CAPR16GY	plug round 1.5" grey	8

1052 Accessory Package Starter Ramp - One package is needed for each Starter Ramp, includes:

1053	connecting plate starter	2
CAPR16GY	plug round 1.5" grey	8
1040	bolt package ramp rail	1

1050 Accessory Package TB Platform - One package is needed for each TB Platform in addition to the 1039:

1037	leg socket	2
1054	bolt pkg turnback	1
EB	extruded bracket	2
RAILTBC	tube 14"	2

1055 Accessory Package Ramp Connecting Kit - One package is needed for each Ramp connection, includes:

1036	connecting angle	2
1037	leg socket	2
1056	bolt pkg ramp support	1